

Tilex® Disinfecting Cleaners



Spray Away Tough Soils with Tilex Disinfecting Cleaners

CloroxPro® Tilex® Disinfecting Sprays are formulated to effectively remove and help prevent the build-up of difficult soils—like mold and mildew, soap scum and hard water deposits. **Let CloroxPro sprays do the work!**

WHY IT MATTERS: Mold/Mildew can cause health concerns for some building occupants, trigger allergic reactions¹ and if left untreated, can lead to costly repairs (estimated average cost—\$25/sq. ft. to remediate²).

Soap Scum/Hard Water Deposits. More than 85% of the US has hard water.³ Hard water can lead to the build-up of soap scum and calcium/lime/rust deposits. This can impact the performance of appliances and fixtures⁴.

Tilex® Disinfecting Mold & Mildew Remover:

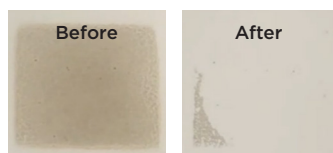
- ▶ Kills 99.9% of germs*
- ▶ Kills mold & mildew*
- ▶ Eliminates mold & mildew stains without scrubbing
- ▶ Prevents regrowth for up to 4 weeks*
- ▶ Whitens tile & grout



The product was sprayed onto ceramic tiles and grout stained with mold. The product was left to sit for 5 minutes and then the final image was taken (no scrubbing)

Tilex® Disinfecting Soap Scum Remover:

- ▶ Dissolves soap scum without scrubbing
- ▶ Helps remove the build-up of hard water deposits
- ▶ Leaves surfaces clean and shiny
- ▶ Bleach-free



Soap scum on ceramic tile after treating with product, waiting 30 seconds and gentle wiping with a damp sponge (no scrubbing)

Efficient Solutions:

- ▶ No mixing or diluting required, so less time and error
- ▶ Smart-tube proprietary bottle technology. Spray every drop and reduce waste



* When used as directed on hard, nonporous surfaces

1. Mold and Health. EPA. <https://www.epa.gov/mold/mold-and-health>

2. How much does mold remediation and removal cost?. Forbes. <https://www.forbes.com/home-improvement/home/mold-remediation-removal-costs/>

3. What is hard water and which cities have hard water. <https://ecopure.com/learning-center/what-is-hard-water/#:~:text=An%20overwhelming%2085%20percent%20of,with%20hard%20water%20is%20high>

4. <https://americanhomewater.com/what-is-limescale-how-can-you-get-rid-of-it/>

Disinfection Efficacy Claims

	Tilex Mold & Mildew Remover	Tilex Soap Scum Remover
Disinfection	Contact Time	Contact Time
BACTERIA		
Community Associated Methicillin Resistant <i>Staphylococcus aureus</i> (CA-MRSA)	5 min	
<i>Escherichia coli</i> O157:H7 (<i>E. coli</i>)	5 min	
Extended Spectrum Beta Lactamase (ESBL) producing <i>Escherichia coli</i> (ESBL producing <i>E. coli</i>)	5 min	
<i>Pseudomonas aeruginosa</i> (<i>Pseudomonas</i>)	5 min	10 min
<i>Salmonella enterica</i> (<i>Salmonella</i>)	5 min	10 min
<i>Staphylococcus aureus</i> (<i>Staph</i>)	5 min	10 min
<i>Streptococcus pyogenes</i> (<i>Strep</i>)	5 min	
FUNGI		
<i>Alternaria alternata</i>	5 min	
<i>Aspergillus brasiliensis</i> (mildew)	5 min	
<i>Aspergillus niger</i> (mildew)	5 min	10 min
<i>Cladosporium herbarum</i>	5 min	
<i>Mucor bainieri</i>	5 min	
<i>Penicillium chrysogenum</i> (<i>Penicillium</i>)	5 min	
<i>Trichophyton interdigitale</i> tested as <i>Trichophyton mentagrophytes</i> (Athlete's Foot Fungus)	5 min	
VIRUSES		
Influenza A virus	5 min	10 min
Respiratory Syncytial Virus (RSV)		10 min
Rhinovirus (type 37)		10 min
SARS-CoV-2 (cause of COVID-19)	1 min	10 min

Product Information

**CloroxPro®
Tilex® Disinfecting
Instant Mold &
Mildew Remover**



Case UPC:
35600 9/32 oz.

Case UPC:
35605 4/128 oz., refill

**CloroxPro®
Tilex® Disinfecting
Soap Scum Remover**



Case UPC:
35604 9/32 oz.

To find out more about the products, please visit <https://www.cloroxpro.com/products/tilex/instant-mildew-remover/> or <https://www.cloroxpro.com/products/tilex/soap-scum-remover-disinfectant/>

Where to Use



Restrooms

- ▶ Sinks
- ▶ Faucets
- ▶ Drains



Locker Rooms/ Training Areas

- ▶ Shower Stalls
- ▶ Tile & Grout
- ▶ Countertops



Kitchen (non-food contact)

- ▶ Sinks
- ▶ Glazed ceramic tile
- ▶ Appliances



Other Areas

- ▶ Long Term Care
- ▶ Schools
- ▶ Hotels

Tilex® Disinfecting Soap Scum Remover—safe for use on these surface materials¹

Chrome • Corian® • Enamel • Fiberglass • Formica® • Glass • Glazed Ceramic • Glazed Porcelain • Plastic • Vinyl
Marlite® • Metal • Painted Woodwork • Sealed Granite • Stainless Steel • Synthetic Marble • Cultured Marble • Linoleum

Tilex® Disinfecting Mold & Mildew Remover—safe for use on these surface materials¹

Corian® • Cultured Marble • Fiberglass • Finished Wood¹ • Glass • Glazed Porcelain
Laminate Plastic • Resilient Flooring • Sealed Grout • Stainless Steel • Vinyl

Do not use on: natural marble, brass, or varnished wood

1. Do not allow puddles of product to remain on surface. Do not use on unsealed, unfinished, visibly worn, oiled or waxed wood surfaces. Product can discolor wood surfaces if misused. Test a small area first. Corian® is a registered trademark of E. I. du Pont de Nemours and Company. Formica® is a registered trademark of The Diller Corporation. Marlite® is a registered trademark of Marlite, Inc.



For more information, contact your
Clorox sales representative.
Call: 1-800-492-9729
Visit: www.cloroxpro.com

© 2023 Clorox Professional Products Company,
1221 Broadway, Oakland, CA 94612.

NI-61349